

BETWEEN THE HAMMER AND THE ANVIL

SCENARIO ASL TAC2 Translated by Coastal Fortress Gaming Group



Victory Conditions:

The winner is the side which, at the end of the scenario, entirely controls building K5.

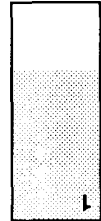
KHRISTISHCHE, January 26, 1942:

Benefitting from the winter, Marshal Timoschenko decided to launch a significant offensive against German Army Group South. The Russians managed to create significant openings aimed at reaching the basin of Donetsk from Izyum. Khristishche, held by the first battalion of the 196th infantry regiment, controlled the road to Slavyansk. From January 23, the Russians made many expensive attempts to take Khristishche but all were pushed back. It was not until dawn of the 25th that a patrol succeeded in penetrating the city.

Board Placement:

Balance:

- ★ Replace the 8-0 leader of the Russian reinforcements with one 8-1
- ✚ Add 2 LMG to the OB of company M

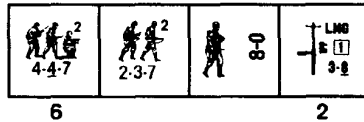


Only rows A through V are playable

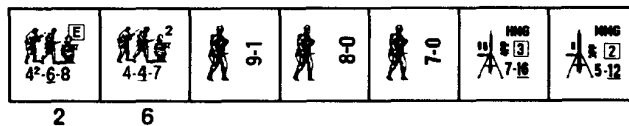
✚ Germans sets up first	★	1	2	3	4	5	6	7	END
★ Russians moves first									



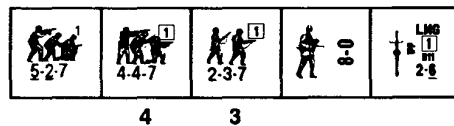
Elements of 1st Battalion of the 196 Infantry Regiment [ELR:4]
set up between the lines D and H inclusive {SAN:0}:



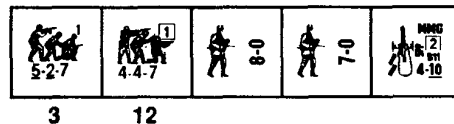
Reserves of Company M [ELR:4]
set up between the lines T and V inclusive:



Infiltrating Patrol of the Siberian Fusilliers Regiment, LVII Army [ELR:2]
set up within 3 hexes of L5 {SAN:0}:



Reinforcement Troops [ELR:2]
enter on turn one on the southern edge:



Scenario Design: Emmanuel Regaudie '91

SSR:

1. EC are wet, with no wind at start.
2. The ground is frozen and foxholes are not allowed.
3. All the buildings are wooden and single story.
4. The Russian troops which are placed on the board at the beginning of the scenario cannot setup more than 2 squads or their equivalent in each building.

Aftermath: Disguised as Germans, five Russian soldiers succeeded in creating a sufficient breach so that the patrol could penetrate in the city. It took position at 0130 hrs in buildings and tried as much as possible to badger the Germans, already exhausted by three days of uninterrupted combat. However, the commander of Company M delegated on the spot his sections of command and reserve and succeeded in eliminating the pocket. The Russians had to retreat while a commissar and some men heroically defended their positions. The Russian command decided to benefit from the situation to bear down on the hastily reconstituted German line of defense but an artillery barrage of the group attached to the 1st battalion put an end to this offensive. It was only towards 0930 hrs that the last Russian defenders surrendered.